



YOUR PRETREATMENT HOUSE

T-IFDS HEAVY DUTY TROMMELS FED DRUM

DESIGN & MANUFACTURED BY



T-IFDS Designed and manufactured to separate solid waste.



WHAT IT MAKES

A screening device that consists of an inclined cylinder covered with screening cloth.

This cylinder rotates slowly and continuously, while it is being fed with material to be screened. The inclined walls of this rotating cylindrical screen separate the material being fed into different fractions.



ENCAPSULATED SOLUTION



APPLICATIONS

ENERGY	PULP & PAPER
FOOD WASTE	MANURE

BENEFITS

- High reliability
- Low energy consumption
- Transport costs reduction
- Naked or fully enclosed design
- Indoor & outdoor installation
- Simple & minimal maintenance

FEATURES

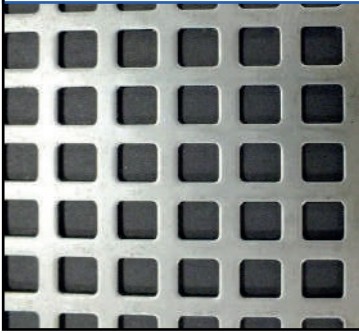
Perforated Plate Screen – Plate rolled and welded to form the drum is significantly stronger than the typical steel skeleton with mesh attached. Rolled steel plate drums have the holes cut out of the plate and are less prone to damage from foreign objects like steel bars. Steel plate is easier to clean due to the lack of ridges (which are found in mesh designs). The lack of ridges also reduces the wear in plate screens compared to mesh.

Plate Thickness – The thickness of the plate used to manufacture the drum is determined by the impact loadings which will occur in the drum from heavy objects. To a lesser extent thicker drums will be used to increase the life from wear.

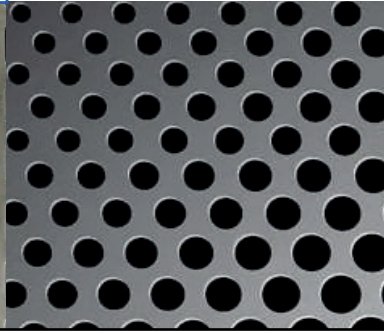
Drum Cleaning – Cleaning requirements with square holes will be more than for round holes due to the extra “grab” of the hole on the material in the trommel.

TYPES OF FILTRATIONS

SQUARE



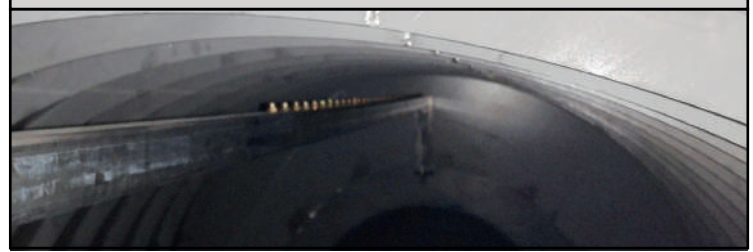
ROUND



Hole Sizes and Shape – based on :

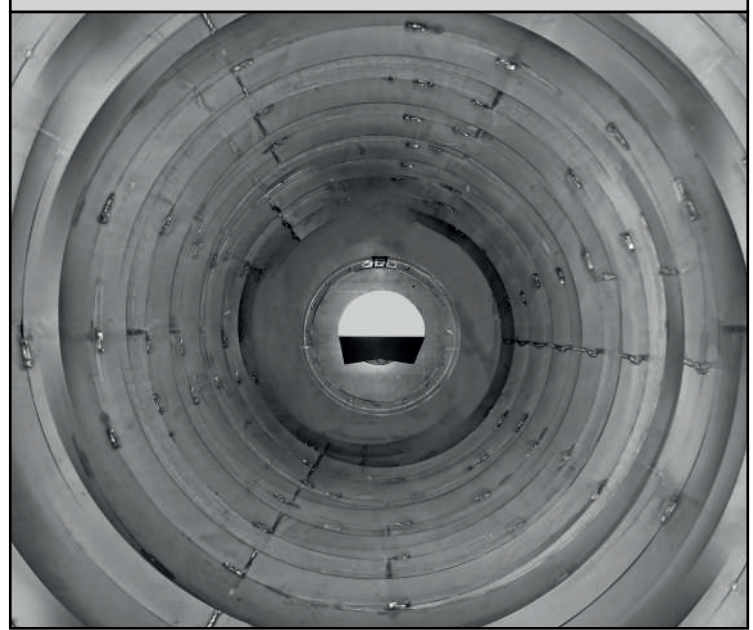
- The size of product needed as an undersize from the screen
- The open area requirement – square holes are larger in area than round ones.
- Product agitation – this it's higher with square holes due to the flat edge “grabbing” more material (somewhat similar to what steel mesh screens can achieve) and potentially retaining it, which leads to the cleaning system.

WASHING SYSTEM



Drum With Internal Screw – Used where the drum angle is either level or a slight slope ie <5 deg. Level drums require an internal spiral to move the material through the drum. Sloped drums rely on the material moving through the drum by being rolled or lifted (by lifter bars) further down the drum each movement (or drop).

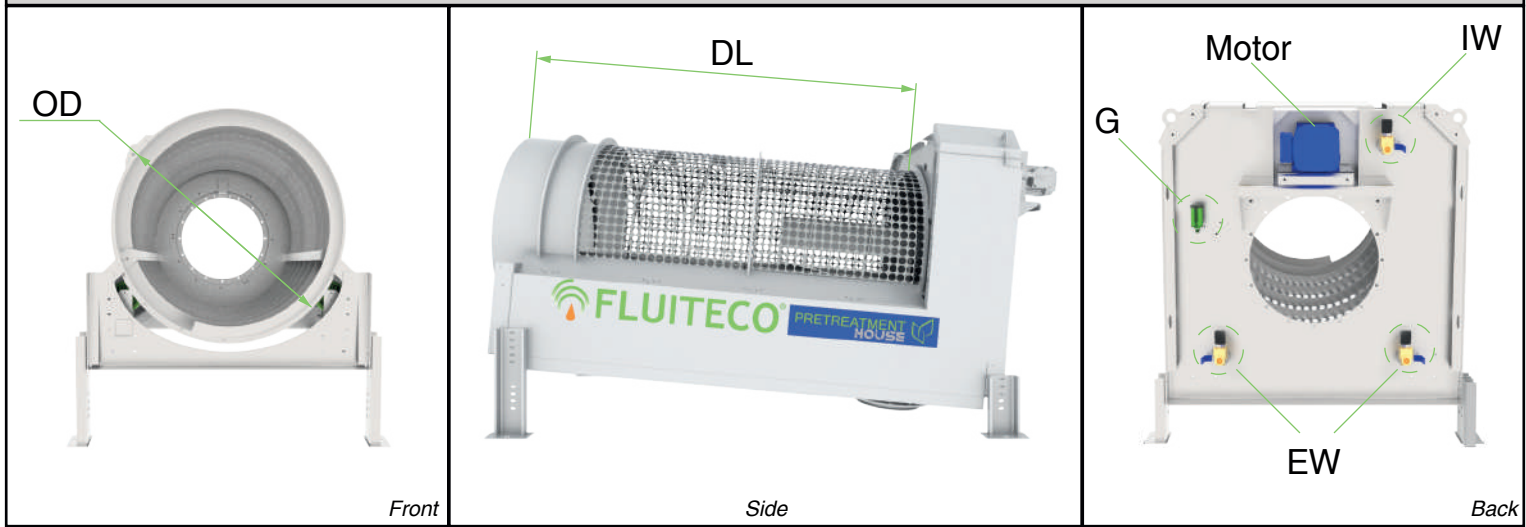
DRUM



INSTALLATIONS



HEAVY DUTY TROMMELS FED DRUM



TECHNICAL DATASHEET

Model	15-3000	15-4500	18-4500	18-5500	20-5500	20-7000
DRUM						
ODiameter	1500mm		1800mm		2000mm	
DLength	3000mm	4500mm	4500mm	5500mm	4500mm	5500mm
FILTRATION						
Type	Square Round Slotted					
Perforated Sheet	10mm → 150mm					
MOTORISATIONS						
Power	2,2Kw		3Kw		4Kw	5,5Kw
DEVICES						
Grease	Always included					
WASHING SYSTEM						
EWash	External Washing system - Always included					
IWash	Internal Washing system - On Request					
Solenoid Valve	24Vdc - On Request					
CONSTRUCTION MATERIALS						
Drum	SS304 SS316 Duplex					
Carpentry	Painted Micro Ally Steel SS304 SS316 Duplex					

